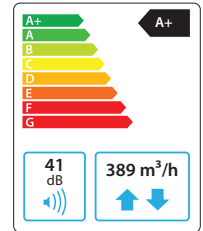


# Domekt CF 400 V C6

Maximal air flow, m <sup>3</sup> /h	389
Maximal air flow, l/s	108
Unit weight, kg	54
Supply voltage, V	1~230
Maximal operating current, A	HE10.5
Thermal efficiency of heat recovery, %	88
Reference flow rate, m <sup>3</sup> /s	0,076
Reference pressure difference, Pa	50
SPI, W/(m <sup>3</sup> /h)	0,22
Filters dimensions BxHxL, mm	350x235x46
Electric power input of the fan drive at reference flow rate, W	33
Electric power input of the fan drive at maximum flow rate, W	91
Electric air heater capacity, kW / Δt, °C	0,5 / 5,4
Electric preheater capacity, kW / Δt, °C	1,5 / 16,3
Maintenance space, mm	600
Control system	C6



## Acoustic data

A-weighted sound power level  $L_{WA}$ , dB(A) at reference flow rate

Supply inlet	58
Supply outlet	53
Exhaust inlet	58
Exhaust outlet	53
Casing	41

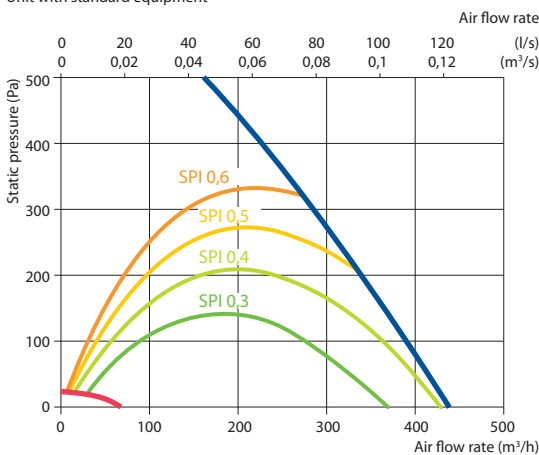
A-weighted sound pressure level  $L_{PA}$ , dB(A)

10 m<sup>2</sup> normally isolated room, distance from casing – 3 m.

Surroundings	31
--------------	----

## Performance

Unit with standard equipment



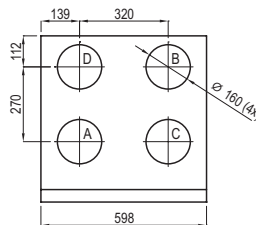
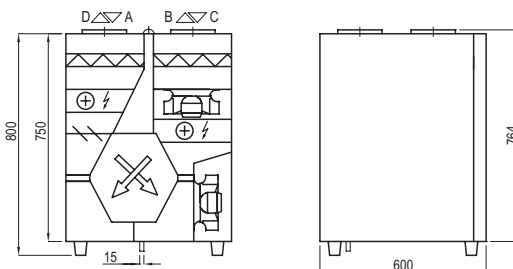
## Temperature efficiency

	Winter					Summer		
Outside temperature, °C	-23	-15	-10	-5	0	25	30	35
After heat exchanger*, °C	17,4*	17,9*	17,9*	17,9	18,6	22,5	23,2	24

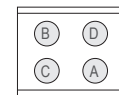
indoor +22°C, 20 % RH.

\* calculations made after evaluation of the preheater.

Shown as right (R1)



Shown as left (L1)



- A outdoor intake
- B supply air
- C extract indoor
- D exhaust air

## Accessories

Closing damper	AGUJ-M-160+LF230/CM230
Silencer	A/D AGS-160-50-600-M
	B/C AGS-160-50-900-M
Water heater	DH-160
PPU	PPU-HW-3R-15-0,4-W2
2-way valve (heater)	VVP47.10-0,4

Water cooler	DCW-0,4-3
2-way valve (cooler)	VVP47.10-1,6
Outdoor grill	LD-160
Water heater-cooler	DHCW-160
Cooling unit	MOU-12HFN8+KA8140

